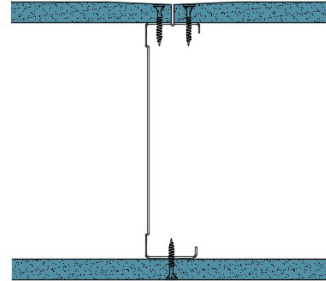


146-K-53 - SPEEDLINE System Data Sheet - Version V1 (24-10-23)

SPEEDLINE 146mm 'C' Stud Partition @600mm
Ctrs, with Knauf 12.5mm Soundshield Plus each
side



System Performance Breakdown

Fire Resistance:

BS476 Part 22:1987:

Test Ref & Date or Applied Ref & Report:

Max Height:

Thickness:

Duty Grade: BS 5234: Part 2:1992:

Sound Insulation:

30/30 Minutes (Integrity/Insulation).

BTC 17436F - BRE Report P102396-1011B

Refer to Speedline Specification Clause

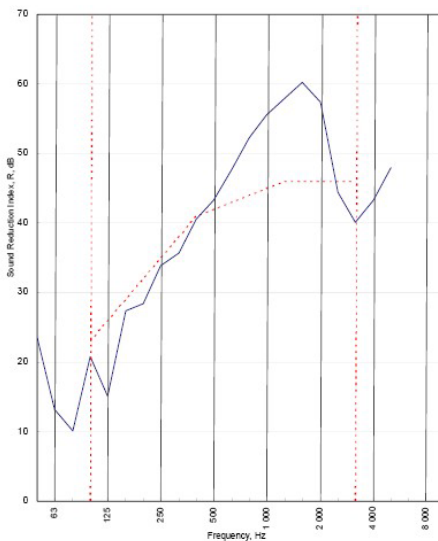
173 mm. (At Base Track, Excluding Finishes)

Medium - Annexes A-F

42 R_w dB, Date Tested or Assessed Against - 70-K-53





Test Code:
H17446AA
Test Date:
28/06/2011

Freq. Hz	R dB
50	23.5
63	13.2
80	10.1
100	20.8
125	15.1
160	27.4
200	28.4
250	33.8
315	35.7
400	40.6
500	43.3
630	47.7
800	52.3
1000	55.6
1250	58.0
1600	60.2
2000	57.4
2500	44.5
3150	40.1
4000	43.3
5000	48.0
6300	
8000	
10000	



Rating according to BS EN ISO 717-1:1997	R_w (C;Ctr) = 42 (-4;-9) dB		
Evaluation based on laboratory measurement results obtained by an engineering method:	Max dev. 10.9 dB at 125 Hz		
	$C_{50-500} = -5$ dB	$C_{50-500} = -4$ dB	$C_{100-500} = -3$ dB
	$C_{160-500} = -14$ dB	$C_{160-500} = -14$ dB	$C_{100-500} = -9$ dB

TESTED AT ONE OF THE UKAS ACCREDITED LABORATORIES BELOW

- B.T.C (H-Ref on Graph) 
- B.R.E 
- AIRO 
- S.R.L 

Customer: **Metsec plc Hepsec Division**

BTC 17446A: Page 8 of 10



SPEEDLINE Drywall Systems, Adsetts House, 16 Europa View, Sheffield Business Park, Sheffield, S9 1XH.

Tel: 0114 231 8030.

Email: enquiries@speedlinedrywall.co.uk

(As per the requirements set out in ISO/IEC 17025:2017 regarding test data the results stated have been carried out by voestalpine Metsec plc as part of the contract to supply Speedline Metal Sections to SIG Plc)